



20170422

July 14, 2017 11:47 AM

Fees: \$30.00

Julie A. Carlson  
Register of Deeds  
KEWEENAW COUNTY

Pages: 4

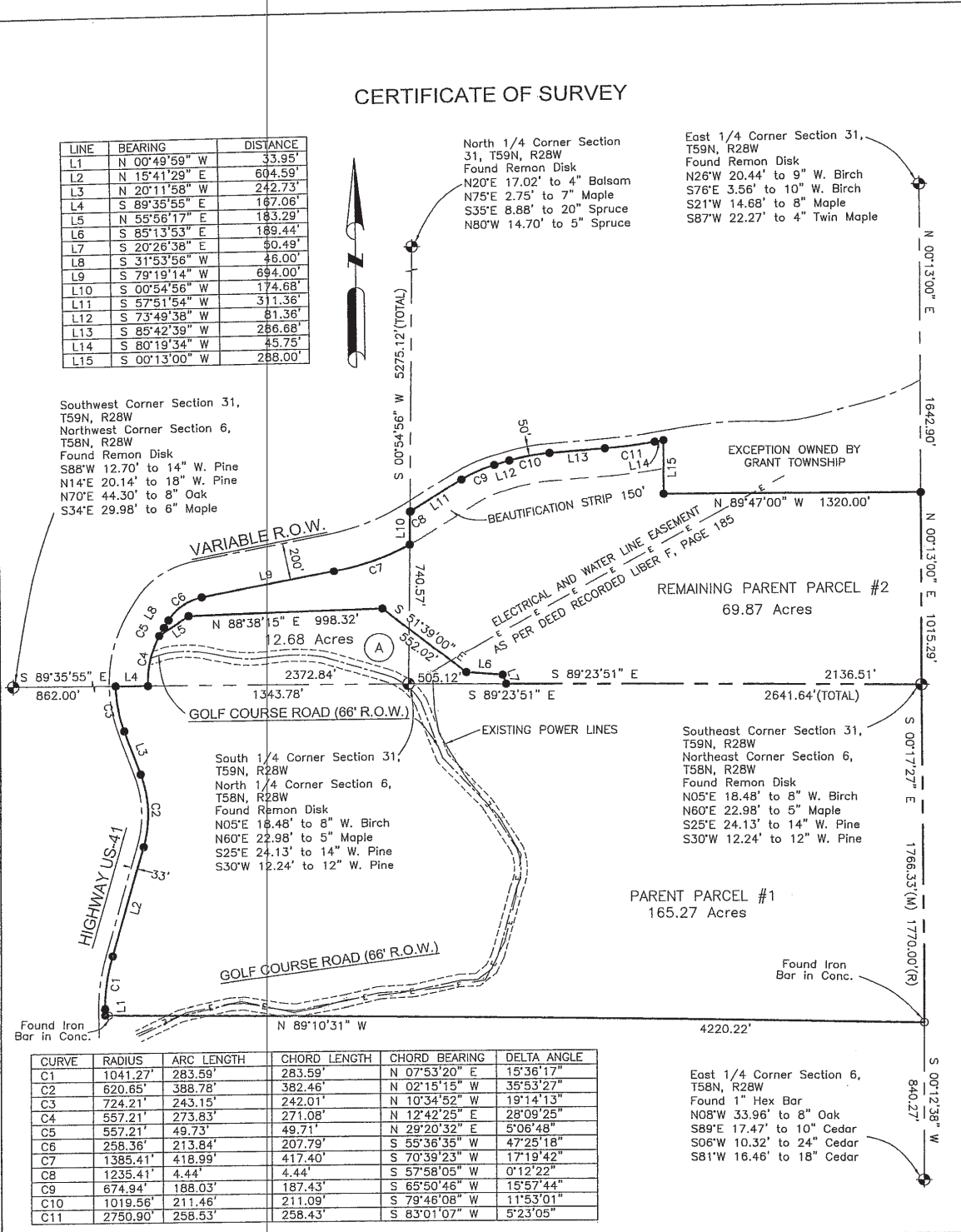
### CERTIFICATE OF SURVEY

LINE	BEARING	DISTANCE
L1	N 00°49'59" W	33.95'
L2	N 15°41'29" E	604.59'
L3	N 20°11'58" W	242.73'
L4	S 89°35'55" E	167.06'
L5	N 55°56'17" E	183.29'
L6	S 85°13'53" E	189.44'
L7	S 20°26'38" E	50.49'
L8	S 31°53'56" W	46.00'
L9	S 79°19'14" W	694.00'
L10	S 00°54'56" W	174.68'
L11	S 57°51'54" W	311.36'
L12	S 73°49'38" W	81.36'
L13	S 85°42'39" W	286.68'
L14	S 80°19'34" W	45.75'
L15	S 00°13'00" W	288.00'

North 1/4 Corner Section 31, T59N, R28W  
Found Remon Disk  
N20°E 17.02' to 4" Balsam  
N75°E 2.75' to 7" Maple  
S35°E 8.88' to 20" Spruce  
N80°W 14.70' to 5" Spruce

East 1/4 Corner Section 31, T59N, R28W  
Found Remon Disk  
N26°W 20.44' to 9" W. Birch  
S76°E 3.56' to 10" W. Birch  
S21°W 14.68' to 8" Maple  
S87°W 22.27' to 4" Twin Maple

Southwest Corner Section 31, T59N, R28W  
Northwest Corner Section 6, T58N, R28W  
Found Remon Disk  
S88°W 12.70' to 14" W. Pine  
N14°E 20.14' to 18" W. Pine  
N70°E 44.30' to 8" Oak  
S34°E 29.98' to 6" Maple



South 1/4 Corner Section 31, T59N, R28W  
North 1/4 Corner Section 6, T58N, R28W  
Found Remon Disk  
N05°E 18.48' to 8" W. Birch  
N60°E 22.98' to 5" Maple  
S25°E 24.13' to 14" W. Pine  
S30°W 12.24' to 12" W. Pine

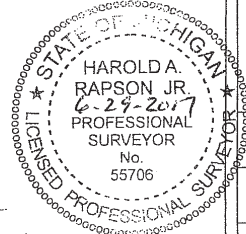
Southeast Corner Section 31, T59N, R28W  
Northwest Corner Section 6, T58N, R28W  
Found Remon Disk  
N05°E 18.48' to 8" W. Birch  
N60°E 22.98' to 5" Maple  
S25°E 24.13' to 14" W. Pine  
S30°W 12.24' to 12" W. Pine

CURVE	RADIUS	ARC LENGTH	CHORD LENGTH	CHORD BEARING	DELTA ANGLE
C1	1041.27'	283.59'	283.59'	N 07°53'20" E	15°36'17"
C2	620.65'	388.78'	382.46'	N 02°15'15" W	35°53'27"
C3	724.21'	243.15'	242.01'	N 10°34'52" W	19°14'13"
C4	557.21'	273.83'	271.08'	N 12°42'25" E	28°09'25"
C5	557.21'	49.73'	49.71'	N 29°20'32" E	5°06'48"
C6	258.36'	213.84'	207.79'	S 55°36'35" W	47°25'18"
C7	1385.41'	418.99'	417.40'	S 70°39'23" W	17°19'42"
C8	1235.41'	4.44'	4.44'	S 57°58'05" W	0°12'22"
C9	674.94'	188.03'	187.43'	S 65°50'46" W	15°57'44"
C10	1019.56'	211.46'	211.09'	S 79°46'08" W	1°15'30"
C11	2750.90'	258.53'	258.43'	S 83°01'07" W	5°23'05"

CLIENT: Keweenaw County  
ADDRESS: 5095 Fourth Street  
CITY: Eagle River, Michigan 49950

*Harold A. Rapson*

I hereby certify that I have surveyed and mapped the above or attached described parcel(s) of land that the error of closure is no greater than 1 in 5000. The survey is in full compliance ACT 132 P.A. 1970



CLEARWATER SURVEYING P.L.L.C. P.O. BOX 504 SOUTH RANGE, MI. 49963 PHONE 906-523-5234		
DRAWN HAR	5-24-2017	Boundary survey of parcel in the N 1/2 of Section 6, T58N, R28W AND S 1/2 of Section 31, T59N, R28W, Grant Township, Houghton County, Michigan
APPROVED HAR	6-05-2017	
SCALE 1" = 500'	SHEET 1 of 4	PROJECT NO. T58NR28W0112 GRANT #4